

CONSTANT FILL / FIXED SPEED COUPLING

TYPE SM SMD SMD-X

Specifications:

Rating Table for SM/SMD/SM-DX Couplings: -

COUPLING MODEL SM, SMD, SM-DX	Maximum Ratings in KW at Different Input Speeds RPM.								
	600 RPM	730 RPM	900 RPM	970 RPM	1200 RPM	1470 RPM	1800 RPM	*3000 RPM	*3600 RPM
1	—	0.5	0.9	1.2	2.2	4	7.5	20	26
2	—	0.9	1.7	2.2	4.1	7.5	13.7	30	36
3	—	1.3	2.4	3	6	11	18	38	45
4	1	2	4	5	9	16.5	22	45	—
5	2	4	7	9	16.3	30	42	70	—
6	3	5	9	11	22	40	60	110	—
7	4	8	15	18	34	62	85	140	—
8	6	10	18	23	44	80	120	—	—
8 B	9	16	29	36	68	125	180	—	—
9	12	22	41	52	98	172	246	—	—
9 B	16	29	54	68	129	228	300	—	—
10	22	39	73	91	172	275	370	—	—
10 B	32	57	107	134	253	373	500	—	—
11	47	85	158	198	374	525	775	—	—
12	82	148	278	348	600	750	—	—	—
13	163	293	550	620	850	1100	—	—	—
14	277	500	758	850	1250	—	—	—	—
15	472	850	1148	1250	—	—	—	—	—
16	583	1050	1400	1500	—	—	—	—	—
16 DC	900	1500	1862	2000	—	—	—	—	—

*Coupling for 3000 & 3600 RPM should be selected only after our approval is obtained.

Technical Specification and Dimension Table For SM, SMD, SM-Dx Couplings: -

SM,SMD, SM-DX	ø A	B			ød 4 max	ød 4 max	l4 max	* Dry Weight			Max. Oil Filling In Litres			Thread s 'M'* for Coupli ng	Connect ed Flexible Couplin g Model
		S M	S M D	S M- D X				S M	S M D	S M D- DX	S M	S M D	S M D- DX		
1	295	14 7	-	-	38	-	86	24	-	-	1.9	-	-	3/4" BSW	FXC-I
2	328	15 3	-	-	48	-	90	27	-	-	2.8	-	-	3/4" BSW	FFX1
3	342	15 8	213	24 7	42	28	80	27	30	32	2.9	3.9	4.3	3/4" BSW	FFX-1
4	367	16 0	215	24 9	50	36	90	30	34	35	3.8	4.3	4.6	3/4" BSW	FFX-1
5	406	19 0	220	28 0	65	50	11 0	40	44	45	4.9	5.8	6.7	1" BSW	FFX-2
6	435	21 3	239	31 0	70	53	12 0	55	59	61	6.5	7.7	9.6	1" BSW	FFX-3
7	471	21 8	263	33 3	80	63	13 5	66	71	73	8	9.4	11.3	1" BSW	FFX-3
8	505	23 8	279	35 9	80	63	14 0	77	83	85	9.7	11.5	14.8	1" BSW	FFX-4
8 B	553	25 0	290	38 0	95	70	15 5	96	102	105	14.5	16.1	19.1	1 1/4" BSW	FFX-4
9	584	25 5	305	38 5	95	80	15 5	10 4	110	113	16.1	19.3	20.8	1 1/4" BSW	FFX-4
9 B	620	27 0	335	43 0	95	80	16 0	15 0	165	168	19.4	21.5	24.7	1 1/2" BSW	FP- 1/FFX- 5
10	644	28 0	329	42 4	11 0	85	17 0	17 0	180	185	25.1	28.1	33.9	1 1/2" BSW	FP- 1/FFX- 5
10 B	714/t d>	31 0	355	45 1	11 0	85	19 0	21 0	225	230	31.8	36.5	45.4	1 1/2" BSW	FP-2A
11	751	32 0	375	47 1	12 0	10 0	20 0	25 4	268	273	37.1	42.9	49	# Ø50- 8P	FP-2A
12	845	35 9	435	55 5	13 0	11 0	24 0	31 0	345	355	51.3	65.6	71.5	# Ø50- 8P	FP-2B

13	960	44 1	489	61 9	15 0	-	27 0	44 0	480	495	72.4	91.3	106. 6	# Ø50- 8P	FP-3
14	1104	45 1	494	62 4	16 0	-	27 5	68 2	730	745	114. 7	131. 9	153. 9	# Ø65- 16P	FP-4B
15	1230	48 5	594	72 4	16 0	-	27 5	85 0	920	940	147. 6	181. 4	193. 1	# Ø75- 16P	FP-4B
16	1298	58 6	668	79 8	19 0	-	32 0	-	125 0	-	189. 2	241. 7	268. 4	# Ø75- 16P	**
**16 DC	1298	83 1	-	-	19 0	-	32 0	-	180 0	-	-	-	-	# Ø75- 16P	**

- The min bore d4 should be > withdrawal bolt dia M by atleast 2 mm.
- With Connected flexible Coupling.
- 16-Rfer to us for Detail.
- Square Threads

Connected Flexible Coupling Model Wise: -

Model SM-SMD-SM-DX	Internal Hub			Internal Hub		
	Φd1 max.	Φd1 max.	l1	Φd2 max.	l2 max.	l2
3,4	48	67	67	60	75	130
5	60	72	72	75	90	150
6,7	80	92	72	90	110	170
8,8B,9	90	102	87	100	120	195
9B,10	-	-	-	125	150	230

Model SM-SMD-SM-DX	Pad Type Coupling			9B, 10	100	110	120
	Φd3 max.	13	13				
10B,11	120	140	151				
12	140	155	167				
13	160	180	179				
14	160	180	194				
15,16	180	200	214				

Brake Drum Mounting Type SM/SMD/SM-Dx with Brake Drum (Inner Wheel Drive): -

Flexible Coupling Model	Spider Type Coupling				
	ϕE	C	Z	L2	L2
FFX-1	200	75	20	75	130
	250	95	0	75	130
FFX-2	250	95	20	90	150
	300	118	5	90	158
	315	118	5	90	158
FFX-3	300	118	17	110	170
	315	118	17	110	170
	400	150	5	110	190
FFX-4	300	118	42	120	195
	315	118	42	120	195
	400	150	10	120	195
	500	190	5	120	230
*FFX-5	400	150	29	150	230
	500	190	5	150	246

- For fluid Coupling Model SM/SMD/SM-DX - 9B & 10.

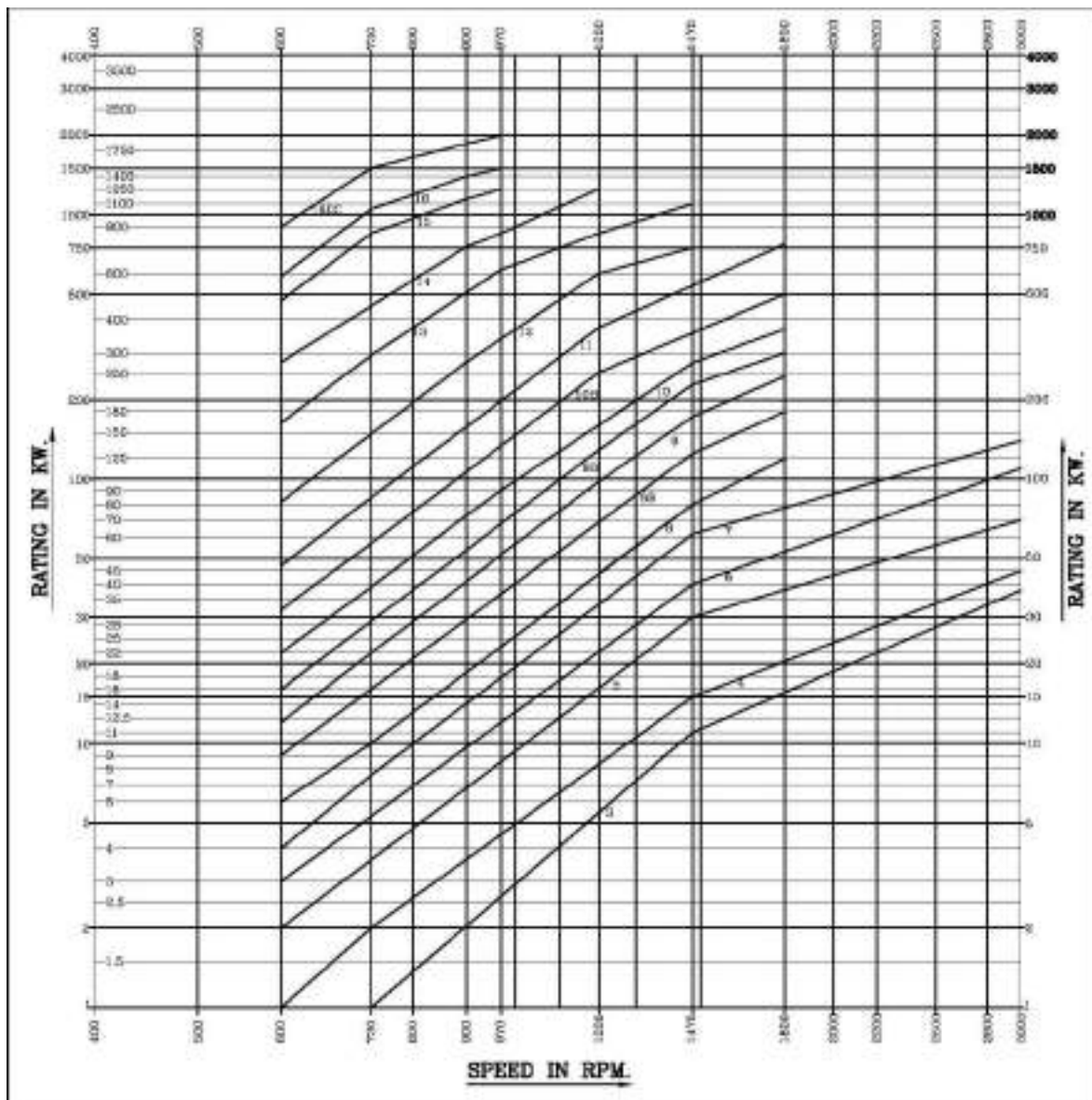
Mass Moment Of Inertia "J" With Oil in Kg M²: -

Model	Outer Wheel	Inner Wheel
SM-3	0.22	0.04
SM-4	0.33	0.06
SM-5	0.68	0.21
SM-6	0.89	0.24
SM-7	1.32	0.34
SM-8	1.72	0.37

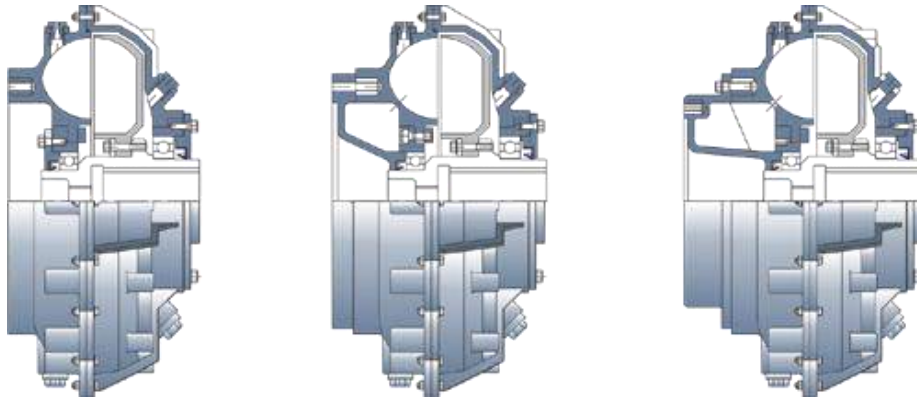
SM-8B	2.4	0.64
SM-9	2.82	0.75
SM-9B	4.65	1.53
SM-10	5.01	1.72
SM-10B	10.15	2.9
SM-11	11.66	3.41
SM-12	18.3	5.56
SM-13	35.74	12.22
SM-14	61.55	21.7
SM-15	93.13	33.7
Model	Outer Wheel	Inner Wheel
SMD-3	0.23	0.04
SMD-4	0.35	0.06
SMD-5	0.71	0.21
SMD-6	0.97	0.24
SMD-7	1.47	0.34
SMD-8	1.85	0.39
SMD-8B	2.61	0.67
SMD-9	3.06	0.78
SMD-9B	5.09	1.58
SMD-10	6.07	1.79
SMD-10B	11.3	3
SMD-11	12.97	3.55
SMD-12	20.33	5.86
SMD-13	39.82	12.75
SMD-14	68.04	22.56
SMD-15	102.7	35.07
SMD-16	162	54.1
Model	Outer Wheel	Inner Wheel
SMDX-3	0.24	0.04
SMDX-4	0.36	0.06
SMDX-5	0.74	0.21
SMDX-6	1.04	0.24
SMDX-7	1.59	0.34
SMDX-8	1.96	0.39
SMDX-8B	2.76	0.67
SMDX-9	3.24	0.78
SMDX-9B	5.55	0.58
SMDX-10	7.04	1.79

SMDX-10B	12.3	3
SMDX-11	14.07	3.55
SMDX-12	21.93	5.86
SMDX-13	43.02	12.75
SMDX-14	73.14	22.56
SMDX-15	110.7	35.07

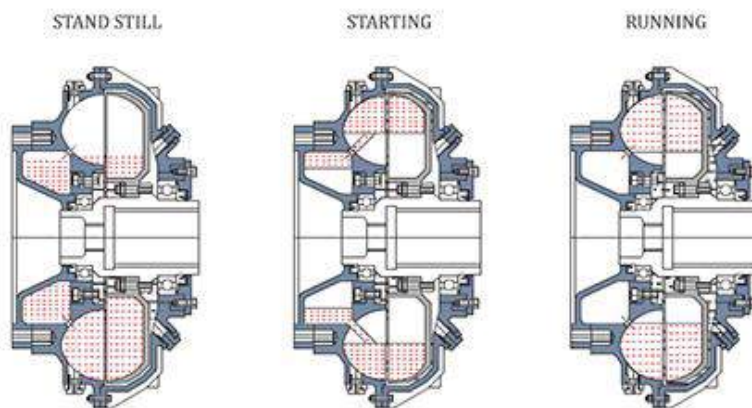
SM/SMD/SM-Dx Rating Chart Model: -



Different Executions of Oil Circuit:

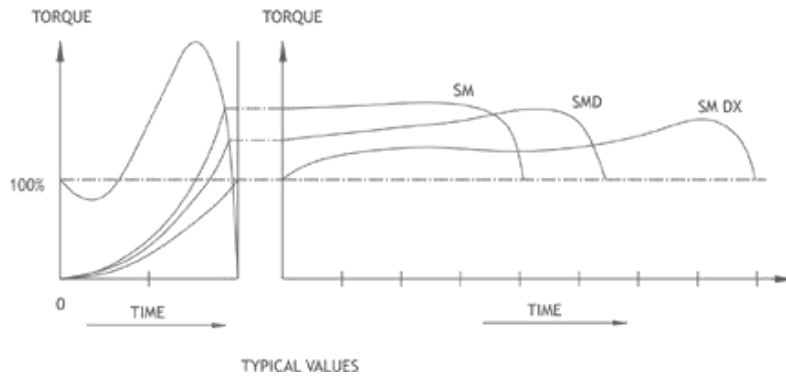


Oil Circuit and Oil levels with Delayfil Chamber:

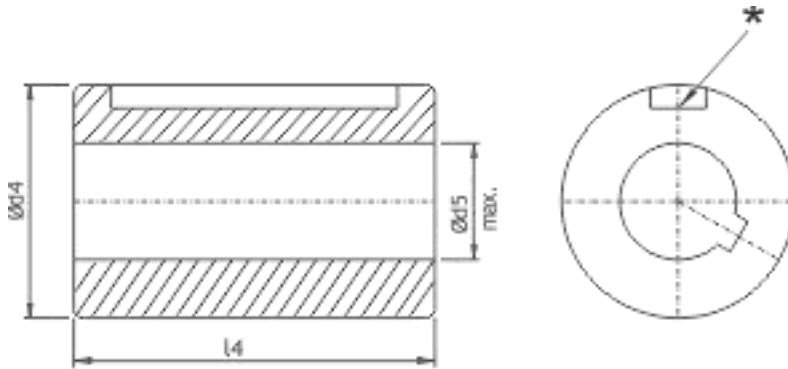


Starting Torque Characteristics With & Without Delayfil Chamber:

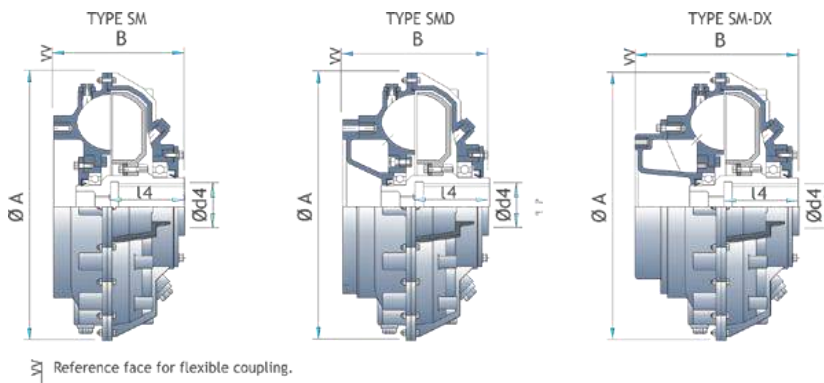
STARTING TORQUE CHARACTERISTICS WITH & WITHOUT DELAYFIL CHAMBER



Coupling Types Sm/Smd/Sm-Dx:

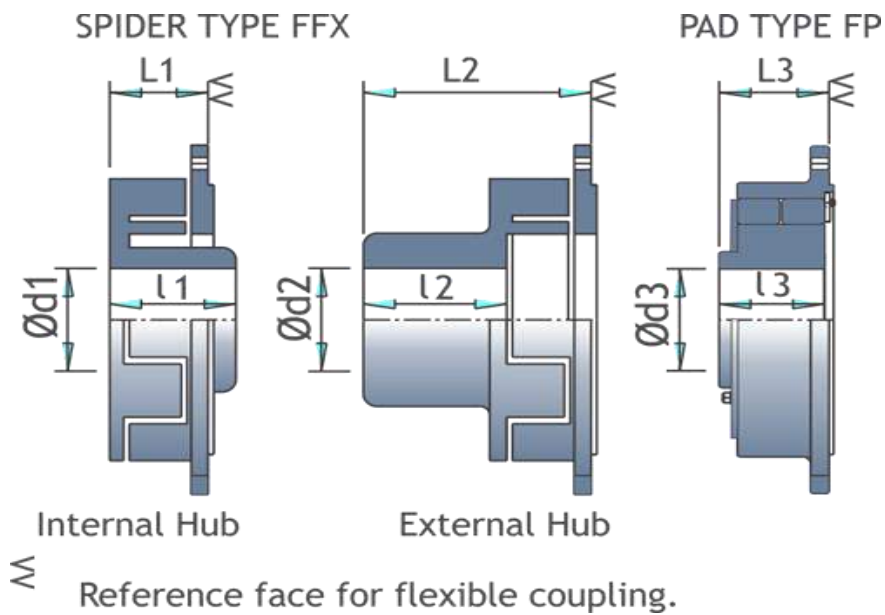


TYPE SM/SMD/SM-DX:



VY Reference face for flexible coupling.

Connected Flexible Coupling Model Wise:



Brake Drum Mounting

Type SM/SMD/SM-DX with Brake Drum (Inner Wheel Drive)

